



## ASSESSMENT OF THE LOCAL HYDRODYNAMIC ZONES IN A THREE-PHASE AIRLIFT REACTOR: LOOKING FOR THE LOWEST LIQUID-PHASE $Re$

## EVALUACIÓN DE LAS ZONAS HIDRODINÁMICAS LOCALES EN UN REACTOR AIRLIFT TRIFÁSICO: BUSCANDO EL $Re$ DE FASE LÍQUIDA MÁS BAJO

M.A. Lizardi-Jiménez\* and M. Gutiérrez-Rojas

*Departamento de Biotecnología, Universidad Autónoma Metropolitana-Iztapalapa,  
Av. San Rafael Atlizco No. 186 Col. Vicentina, C.P. 09340, Ciudad de México, México.*

Received 6 of October 2010; Accepted 2 of February 2011

### Abstract

Hydrodynamic in main airlift reactor (ALR) zones (riser and downcomer) was evaluated in order to find the lowest Reynolds number ( $Re$ ) in a three-phase ALR. In our study, three phases were identified: one gaseous (air) and two liquids (oil and aqueous). Two  $Re$  of the liquid species, one for each phase, were defined:  $Re_{aq}$  and  $Re_{oil}$  corresponding to the aqueous and oil phase, respectively. Since gas phase was considered by hold up ( $\varepsilon_g$ ) in our work. In 10 L ALR, riser showed turbulent aqueous phase flow ( $4000 < Re_{aq} < 9000$ ) whereas downcomer exhibited non-turbulent flow ( $1250 < Re_{aq} < 4000$ ).  $Re_{oil}$  in riser ( $5000 < Re_{oil} < 10000$ ) was higher than  $Re_{aq}$ ; whereas in downcomer,  $Re_{oil}$  was lower than  $Re_{aq}$  ( $200 < Re_{oil} < 2200$ ). The oil phase into the downcomer zone was demonstrated to be the most important hydrodynamic constraint and consequently limited mass transfer should be expected. The complexity of three-phase flow and the limited measurement technologies have generated few studies regarding the local hydrodynamics properties restricting three-phase reactors optimization and commercialization; our study is a contribution to identify such restrictions.

**Keywords:** airlift, hydrodynamics, riser, downcomer, three-phase,  $Re$ .

### Resumen

Se evaluó la hidrodinámica en las principales zonas (ascenso y descenso) de un reactor airlift (ALR) trifásico para encontrar el número de Reynolds ( $Re$ ) más bajo. Las fases del estudio fueron: una gaseosa (aire) y dos líquidas (hidrocarburos y agua). Se definieron dos  $Re$  en las fases líquidas:  $Re_{aq}$  y  $Re_{oil}$  correspondientes a las fases acuosa y oleosa. La fase gaseosa fue considerada mediante el coeficiente de retención ( $\varepsilon_g$ ). En el ALR (10 L) la zona de ascenso mostró flujo turbulento ( $4000 < Re_{aq} < 9000$ ) mientras que en la zona de descenso no se observó flujo turbulento ( $1250 < Re_{aq} < 4000$ ). El  $Re_{oil}$  en la zona de ascenso ( $5000 < Re_{oil} < 10000$ ) fue mayor que el  $Re_{aq}$ ; mientras que en la zona de descenso fue menor ( $200 < Re_{oil} < 2200$ ). La fase oleosa en la zona de descenso fue la limitante hidrodinámica y consecuentemente se debería esperar una limitación en la transferencia de masa. La complejidad del flujo trifásico y las limitadas tecnologías para su medición han generado pocos estudios relacionados con las propiedades hidrodinámicas locales restringiendo la optimización y comercialización de los reactores trifásicos; nuestro estudio es una contribución a la identificación de este tipo de restricciones.

**Palabras clave:** airlift, hidrodinámica, ascenso, descenso, trifásico,  $Re$ .

\*Corresponding author. E-mail: cbs204381858@xanum.uam.mx  
Tel. + 52 (55) 5804 6505, Fax + 52 (55) 5804 6407

## 1 Introduction

Airlift reactor (ALR) is a pneumatic reactor agitated with a continuous gas phase provided in form of bubbles, breaking-up towards the liquid phase resulting in an isothermal expansion to keep homogeneity (Chisti, 1989). In case of ALR performance, attention has been focused on two fundamental phenomena: (i) agitation for well mixed liquid phases (Gumery *et al.*, 2009) and (ii) oxygen mass transfer considering geometrics in internal loop reactors (Cerri *et al.*, 2010) and CFD simulations (Huang *et al.*, 2010; Luo *et al.*, 2011). Agitation and mixing is often related to the Reynolds number ( $Re$ ) as a global hydrodynamic parameter i.e., a bulk  $Re$  or a liquid phase  $Re$  (Wongsuchoto and Pavasant, 2004). Recent studies in ALR allow emphasizing the role of aqueous phase  $Re$  in two-phase ALR performance. Unfortunately, none of the works is oriented to study the different local hydrodynamic zones. For all types of ALR, it is possible to distinguish four different local hydrodynamic zones: riser, downcomer, top and bottom clearance (see Fig. 1). Although the hydrodynamic importance of zones in ALR performance is well documented (Sánchez-Mirón *et al.*, 2004; Kilonzo *et al.*, 2006) most of ALR studies neither take into account zones or non-soluble aqueous substrates (e.g. oil) in three-phase systems. Studying aqueous and oil phase hydrodynamics in main three-phase ALR zones is very important because hydrodynamic is strongly implicated in both, aqueous soluble and non-soluble substrates and mass transfer phenomena and the resulting ALR performance; for example, bioengineering and oil biodesulfuration purposes (Mehrnia *et al.*, 2005; Shariati *et al.*, 2007) or using silicone oil as an effective mass transfer vector (Quijano *et al.*, 2009). The aim of this work is to assess, in a three-phase ALR, the local hydrodynamic zone (riser or downcomer) with lower  $Re$  by measuring fluid velocities in the aqueous and oil phases.

## 2 Materials and methods

### 2.1 Reactor

A 10-L operation volume airlift reactor (ALR) was used. The ALR cylindrical vessel was built in Pyrex glass (0.005 m of wall thickness). Gas phase

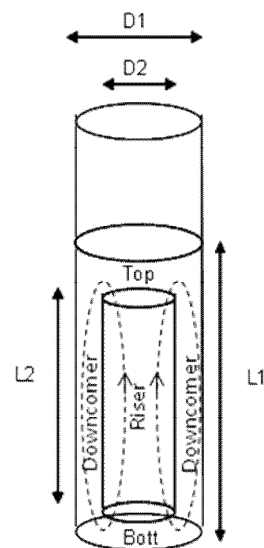


Fig. 1: Geometrical relations and flow pattern in our three-phase airlift reactor.

was introduced into the ALR draft tube. Draft tube was located 0.035 m above the bottom. Geometrical relations and the flow pattern are shown in Fig. 1, in brief:  $D1$  and  $D2$  are reactor (0.14 m) and draft tube (0.09 m) diameter, respectively;  $L1$  and  $L2$  represent reactor (0.70 m) and draft tube (0.54 m) height; riser, top clearance, downcomer and bottom clearance are identified. Geometrical relations:  $D2/D1 = 0.65$ ,  $L2/L1 = 0.77$  and  $L1/D1 = 5$  were used.

### 2.2 Gas sparger

Air was sparged through the draft tube with an L-form perforated (7 orifices; 0.001 m of diameter and 0.004 m of separation) stainless steel tubing (0.006 m internal diameter) driving out air downwards.

### 2.3 Two-liquid phase model medium

In order to adjust surface tension ( $\sigma$ ), a model medium was designed using reference values (50 - 65 dynes  $\text{cm}^{-1}$ ) as suggested elsewhere (Bai *et al.*, 1997; Quijano *et al.*, 2010) by adding different Tween 20 (0-0.15  $\text{mL L}^{-1}$ ) concentrations and 13g  $\text{L}^{-1}$  of hexadecane (HXD).  $\sigma$  was measured with a Manual Fisher Surface Tensiometer Model 20 (Fisher Scientific International, Wisconsin, USA). Viscosity ( $\mu$ ) was determined by using a

viscometer Physica MCR Model 300 (Stuttgart, Germany).

## 2.4 Hydrodynamic parameters

### 2.4.1 Gas hold up

Gas hold up ( $\varepsilon_g$ ) was evaluated into riser and downcomer by photographic method (Ribeiro and Lage, 2004) using a digital camera (Pentax Optio 50) and image analysis software (Image Pro plus 4.1).

### 2.4.2 Aqueous and oil phase hydrodynamic

Three phases (air, aqueous and oil) were involved in ALR, the two slow-moving phases (aqueous and oil) velocities were experimentally evaluated. In order to clearly follow flow patterns thorough model medium, we used two substances simulating water (sodium polyacrylate hydrogel;  $\rho = 1.0 \text{ g cm}^{-3}$ ) and oil (oligosyloxane stained spheres;  $\rho = 0.77 \text{ g cm}^{-3}$ ). A digital videocamera (Sony HD) and on-line chronometer (StopWatch software) were used to monitoring velocities of single spheres as path length/elapsed time ratio in both ALR zones: riser and downcomer. In order to contrast sphere images, HXD was previously

stained with red chillies (*Capsicum annum*) oleoresin (Montoya-Ballesteros *et al.*, 2010), also known as rodophile (Bioquimex-Reka, México; 25.1 g of carotenoid  $\text{kg}^{-1}$ ) (see Fig. 2). The resulting velocities were used to calculate two individual Reynolds numbers (Nielsen *et al.*, 2003) as follows:

$$\text{Re}_{aq} = \frac{DV_{aq}\rho_{aq}}{\mu} \quad (1)$$

$$\text{Re}_{oil} = \frac{DV_{oil}\rho_{oil}}{\mu} \quad (2)$$

Where:  $\text{Re}_{aq}$  and  $\text{Re}_{oil}$  are aqueous and oil phase Reynolds number, respectively.  $D = D_2$  for riser zone; and  $D = (D_1 - D_2)$  for downcomer zone;  $D_1$  is the ALR diameter, cm;  $D_2$  draft tube diameter, cm;  $V_{aq}$  aqueous phase velocity,  $\text{cm s}^{-1}$ ;  $V_{oil}$  oil phase velocity,  $\text{cm s}^{-1}$ ;  $\rho_{aq}$  aqueous phase density,  $\text{g cm}^{-3}$ ;  $\rho_{oil}$  oil phase density,  $\text{g cm}^{-3}$ ;  $\mu$  bulk viscosity (oil in water emulsion),  $\text{g cm s}^{-1}$ . In order to validate our method, the  $V_{aqd}$  values obtained were compared with acid pulse method (Sanchez- Miron *et al.*, 2004). Chisti model (Chisti *et al.*, 1988; Abashar *et al.*, 1998) and the continuity criterion (Chisti, 1989) was used in order to predict superficial aqueous phase velocity ( $V_{aqd}$ ) into downcomer using  $\varepsilon_g$  as follows:

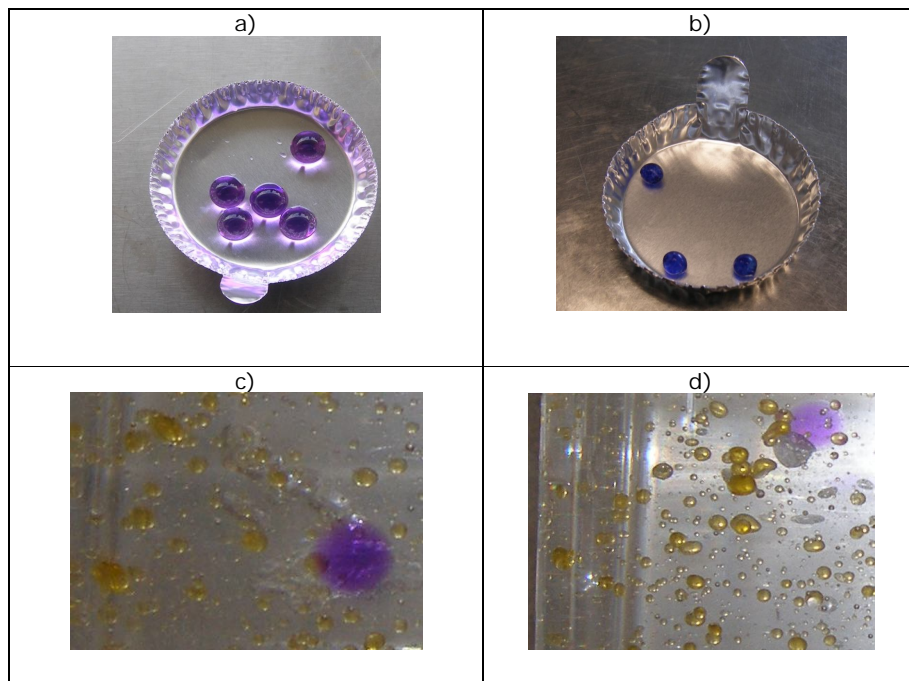


Fig. 2: Polyacrilate (a) and oligosyloxane (b) spheres. Polyacrilate sphere in downcomer (c) and riser (d) clearly distinguished from air bubbles and HXD yellow stained droplets.

$$V_{aqd} = \frac{A_r}{A_d} \left[ \frac{2gL_D(\varepsilon g_r - \varepsilon g_d)}{K \left( \frac{1}{(1-\varepsilon g_r)^2} + \left( \frac{A_r}{A_d(1-\varepsilon g_d)} \right)^2 \right)} \right] \quad (3)$$

Where:  $A_r$  and  $A_d$  are cross section area for riser and downcomer,  $m^2$ , respectively.  $\varepsilon g_r$  and  $\varepsilon g_d$  are gas hold up in riser and downcomer, dimensionless, respectively,  $K$  is the loss friction coefficient, dimensionless,  $g$  is the gravitational acceleration constant,  $m\ s^{-2}$  and  $L_D$  is the draft tube length,  $m$ .

The model assumes the following: (1) steady-state conditions, (2) isothermal conditions, (3) the energy losses terms due to the skin friction in the riser and the downcomer are negligible in comparison to the others dissipation terms, (4) the pressure drop due to acceleration is negligible.

### 2.4.3 Statistical analyses

Data analyses were carried out by using NCSS-2000, version 2001 (Copyright 2001 by Jerry Hintze). Analysis of variance (ANOVA) was performed by comparing tests with  $p < 0.05$ .

## 3 Results and discussion

In order to evaluate hydrodynamic behavior in our three-phase ALR,  $\varepsilon g$ , liquid phases velocities,  $Re_{aq}$  and  $Re_{oil}$  were measured using geometrical relations  $D2/D1 = 0.65$  and  $L2/L1 = 0.77$ . The choice of this configuration is partially according to a similar hydrocarbon/liquid ALR (Gumery *et al.*, 2005) studying dynamics and macro-mixing for design and scale-up purposes. Fig. 3 shows  $\varepsilon g$  as a function of  $U_g$  into riser and downcomer. The  $\varepsilon g$  in the riser was slightly higher than in the downcomer. A potential model:  $\varepsilon g = aU_g^b$  (where  $a$  and  $b$  depend on local hydrodynamic) was used for both: riser ( $a = 0.053$  and  $b = 0.74$ ;  $R^2 = 0.99$ ) and downcomer ( $a = 0.045$  and  $b = 0.72$ ;  $R^2 = 0.98$ ). The differences between  $\varepsilon g$  in riser and downcomer caused liquid phases circulation. The potential model data obtained from Fig. 3 were used in order to predict superficial aqueous phase velocities into downcomer ( $V_{aqd}$ ) using the Chisti model, see Eq. 3. Fig. 4 shows experimental data of  $V_{aqd}$  as a function of  $U_g$  in addition to  $V_{aqd}$  values predicted

by the Chisti model. A good fitting value for the loss friction coefficient ( $K$ ) of 4, close to other work (1.8) with water and kerosene (Abashar *et al.*, 1998), was found.

Fig. 5 shows  $Re_{aq}$  as a function of  $U_g$  and  $\sigma$ , for the selected configuration in riser (3a) and downcomer (3b). As expected, in riser and downcomer,  $Re$  increased as  $U_g$  increased. On the other hand  $Re_{aq}$  slightly decreased as  $\sigma$  increased. A similar performance was also observed in other pneumatic reactors working with two-phase systems (Kantarci *et al.*, 2005). Riser shows turbulent flow ( $Re_{aq} > 4000$ ; see red zone in Fig. 2a) when  $U_g$  was higher than  $0.4\ cm\ s^{-1}$ , whilst downcomer do not (red zone is absent in Fig. 3b).  $Re_{aq}$  increased as  $U_g$  probably due to differences in gas hold up between riser and downcomer, which produces differences in hydrostatic pressure at the ALR bottom, these differences in hydrostatic pressure produce the liquid phase being in continuous movement. The  $Re_{aq}$  decreasing as surface tension increased could be explained by reason of gas hold up decreased as a result of larger bubbles with lower residence time and the resultant decreasing in the differences in hydrostatic pressure. Moreover, lower  $Re_{aq}$  in downcomer (not turbulent) supposes a hydrodynamics limitation for mixing probably imposing mass transfer limitation (Nielsen *et al.*, 2003); this limitation is worst for oil phase as can be seen in figs. 3c and 3d. Figures show  $Re_{oil}$  as a function of  $U_g$  and surface tension.  $Re_{oil}$  in riser ( $5000 < Re_{oil} < 10000$ ) (Fig. 3c) was higher than  $Re_{aq}$ ; whereas in downcomer was lower ( $200 < Re_{oil} < 2200$ ) (Fig. 3d).  $Re_{oil}$  in riser and downcomer were higher and lower than  $Re_{aq}$ , respectively, due to densities differences. Lower  $Re_{oil}$  values in downcomer involve an increasing in boundary layer between oil and aqueous phase, probably resulting in mass transfer constraints (Cerri *et al.*, 2010). Our results suggest that a carefully evaluation of the two  $Re$  species, involved in performance of three-phase ALR was needed since oil phase into the downcomer supposed a clear hydrodynamic and probably mass transfer limitation. Traditional two-phase model that considers only aqueous phase is not enough to explain oil in water reactors. For example, oil-degrading microorganism growth (Medina-Moreno *et al.*, 2009) should consider oil transfer constraints in the bulk. The complexity of three-phase flow and the limited

measurement technologies have generated few studies regarding the local hydrodynamics properties restricting three-phase reactors optimization and commercialization.

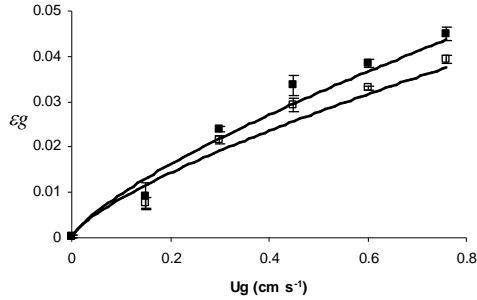


Fig. 3: Gas hold up ( $\varepsilon_g$ ) as a function of superficial gas velocity ( $U_g$ ): (■) riser and (□) downcomer. Continuous line represents potential

model with  $R^2$  higher than 0.98. Error bars represent the standard error for triplicate samples.

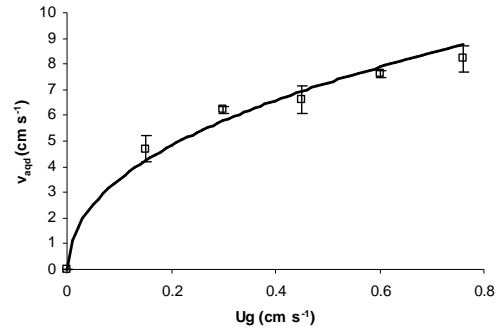


Fig. 4: Superficial aqueous phase velocity into the downcomer ( $V_{aqd}$ ) as a function of superficial gas velocity ( $U_g$ ). Continuous line represents Chisti model with  $R^2$  higher than 0.96. Error bars represent the standard error for triplicate samples.

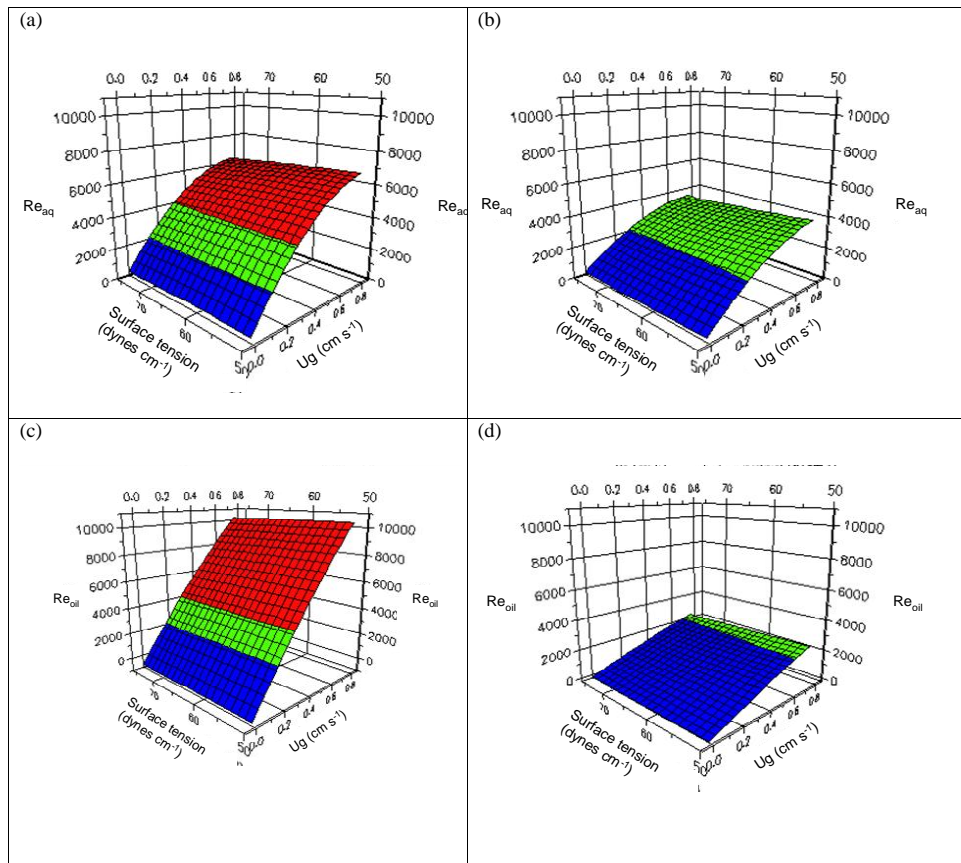


Fig. 5:  $Re_{aq}$  as function of superficial gas velocity ( $U_g$ ) and surface tension ( $\sigma$ ) in riser (a) and downcomer (b);  $Re_{oil}$  as function of  $U_g$  and  $\sigma$  in riser (c) and downcomer (d). Red zone:  $Re \geq 4000$ ; turbulent flow. Green zone:  $4000 \geq Re \geq 2000$ ; transient flow. Blue zone:  $Re \leq 2000$ ; laminar flow.



## Conclusion

Aqueous and oil phase Re for main ALR local hydrodynamics zones, riser and downcomer, in a three-phase ALR were evaluated in this work. Riser shows turbulent aqueous phase flow:  $4000 < Re_{aq} < 9000$  for  $0.15 < Ug < 0.76 \text{ cm s}^{-1}$  whereas downcomer shows non-turbulent aqueous phase flow:  $1250 < Re_{aq} < 4000$  at the same above mentioned Ug values. Oil phase Re in riser ( $5000 < Re_{oil} < 10000$ ) was higher than  $Re_{aq}$ ; whereas in downcomer,  $Re_{oil}$  was lower than  $Re_{aq}$  ( $200 < Re_{oil} < 2200$ ).  $Re_{oil}$  into downcomer zone is supposed to be the most important hydrodynamic constraint allowing us to identify the downcomer as a relevant mass transfer limitation zone.

## Acknowledgements

We acknowledge CONACYT (Consejo Nacional de Ciencia y Tecnología) by scholarship to M. A. Lizardi-Jimenez and PEMEX-Refinación for partial support. Thanks are due to Dr. J. Vernon in providing rhodophile pigment solution.

## References

- Abashar, M.E., Narssing, U., Rouilliard, A. E. (1998). Hydrodynamic Flow Regimes, Gas Holdup, and Liquid Circulation in Airlift Reactors. *Industrial and Engineering Chemistry Research* 199, 1251-1259
- Bai, G., Brusseau, M.L. and Miller, R.M. (1997). Biosurfactant-enhanced removal of residual hydrocarbon from soil. *Journal of Contaminant Hydrology* 25, 157-170.
- Cerri, M.O., Policarpo, L.M. and Badino, A. C. (2010). Gas Hold-Up and mass transfer in three geometrically similar internal loop airlift reactors using newtonian fluids. *International Journal of Chemical Reactor Engineering* 8, 1-14.
- Chisti, Y. Halard, B., Moo-yung, M. (1988). Liquid circulation in airlift reactor. *Chemical Engineering Science* 43, 451-456
- Chisti, Y. (1989). *Airlift Bioreactors*. Elsevier Science Publishers, New York.
- Gumery, F., Ein-Mozaffari, F. and Dahman, Y. (2009). Characteristics of local flow dynamics and macro-mixing in airlift column reactors for reliable design and scale-Up. *International Journal of Chemical Reactor Engineering* 7, 1-45.
- Huang, Q., Yang, C., Yu, g., Mao, Z. (2010). CFD simulation of hydrodynamics and mass transfer in an internal airlift loop reactor using a steady two-fluid model. *Chemical Engineering Science* 65, 5527-5536.
- Kantarci, N., Borak, F. and Klutlu, O. (2005). Bubble column reactors. *Process Biochemistry* 40, 2263-2283.
- Kilonzo, P.M., Margaritis, A., Bergougnou, M.A., Yu, J.T. and Qin, Y. (2006). Influence of the baffle clearance design on hydrodynamics of a two riser rectangular airlift reactor with inverse internal loop and expanded gas-liquid separator. *Chemical Engineering Journal* 121, 17-26.
- Luo, H.P., Al-Dahhan, H. (2011). Verification and validation of CFD simulations for local flow dynamics in a draft tube airlift bioreactor. *Chemical Engineering Science* 66, 907-923.
- Medina-Moreno, S.A., Huerta-Ochoa, S., Lucho-Constantino, C.A., Aguilera-Vázquez, L., Jiménez-González, A. and Gutiérrez-Rojas, M. (2009). Biodegradation modeling of sludge bioreactors of total petroleum hydrocarbons weathering in soil and sediments. *Revista Mexicana de Ingeniería Química* 8, 245-258.
- Mehrnia, M., Towfighi, J., Bonakdarpour, B. and Akbainejad, M. (2005). Gas hold-up and oxygen transfer in a draft-tube airlift bioreactor with petroleum based liquids. *Biochemical Engineering Journal* 22, 105-110.
- Montoya-Ballesteros, L.C., Gardea-Béjar, A., Ayala-Chávez G.M., Martínez-Núñez Y.Y. and Robles-Ozuna, L.E. (2010). Capsaicinoids and color in chilpetin (*Capsicum annuum* var. *aviculare*). Processing effect on sauces and pickles. *Revista Mexicana de Ingeniería Química* 9, 197-207.

- Nielsen, J., Villadsen, J. and Liden, G. (2003). Mass transfer. In: *Bioreactor Engineering Principles*. Kluwer Academic/Plenum Publishers, New York.
- Quijano, G., Revah, S., Gutiérrez-Rojas, M., Flores-Cotera, L. and Thalasso F. (2009). Oxygen transfer in three-phase airlift and stirred tank reactors using silicone oil as transfer vector. *Process Biochemistry* 44, 619-624.
- Quijano, G., Huerta-Ochoa, S. and Gutiérrez-Rojas, M. (2010). Assessment of the limiting step of mass transfer in n-hexadecane biodegradation in a bubble column reactor. *Water Science and Technology* 62, 906-914.
- Ribeiro, Jr C. P. and Lage, P. L. C. (2004). Experimental study on bubble size distributions in a direct contact evaporator. *Brazilian Journal of Chemical Engineering* 21, 69-81.
- Sanchez-Mirón, A., Cerón-García, M.C, García-Camacho, F., Molina-Grima, E. and Chisti, Y. (2004). Mixing in bubble column and airlift reactors. *Transactions Institution of Chemical Engineers Part A. Chemical Engineering Research and design* 82, 1367-1374.
- Shariati, F.P., Bonakdarpour, B. and Mehrnia, M.R. (2007). Hydrodynamics and oxygen transfer behaviour of water in diesel microemulsions in a draft tube airlift bioreactor. *Chemical Engineering and Processing* 46, 334-342.
- Wongsuchoto, P. and Pavasant, P. (2004). Internal liquid circulation in annulus sparged internal loop airlift contactors. *Chemical Engineering Journal* 100, 1-9.